



Klean-MX[®]

A device that glossing
your escalators





Klean-MX[®]



Klean-MX[®]



Dimensions	1275.5mm*523 mm*952.5 mm
Weight	115 kg
Recovery Tank Capacity	15L
Solution Tank Capacity	11L
Brush Width	520 mm
AC Voltage	220V 50Hz
Brush rpm	1200 RPM
Vac Pump	800 W
Water Flow Rate	650 mL/min
Recovery Rate	>75%
Brush Motor	300 W x 2
Noise level (at operator ear)	78dB(A)



Machine size (L x W x H)	325 x380 x 1130 mm
Working width disc	370 mm
Typical Operational Weight	15 kg
Disc brush speed	1600 RPM
Solution tank capacity	1.4 L
AC power input	90-240V AC 50/60Hz
Water Flow Rate	110 ml/min
Brush Gap	102 mm
Brush Motor	350 W
Noise level (at operator ear)	75 dB(A)

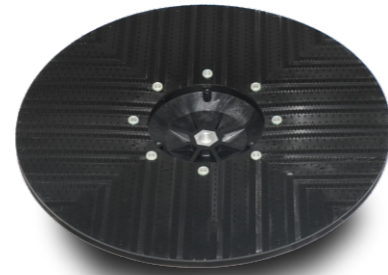


Dimensions	1170 mm*675 mm*1125 mm
Weight	≈68 kg
Recovery Tank Capacity	60L
Solution Tank Capacity	80L





Burnisher
Model:
SH-2000 FA0464

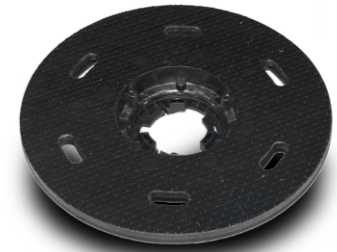


Motor	1.5P 230V
Rotation Speed	2000 RPM
Voltage	220V~240V 50HZ
Power Cord	15m
Working Width	20"/508 mm
Dimensions (L X W X H)	
20" (508 mm)model	32" (813 mm) x 23" (602 mm) x 48" (1229 mm)



Klean-MX®

Floor Machine
Models:
SD-20 FA0463
SD-17 FA0462



Motor	1.5P 230V
Rotation Speed	145 RPM
Voltage	220V~240V 50HZ
Power Cord	15m
Working Width	17"/430 mm 20"/510 mm
Dimensions (L X W X H)	
17" (430 mm) model	23.0" (580 mm)x 18" (460 mm)x 47" (1190 mm)
20"(510 mm) model	25" (620 mm)x21" (530 mm)x47" (1190 mm)

